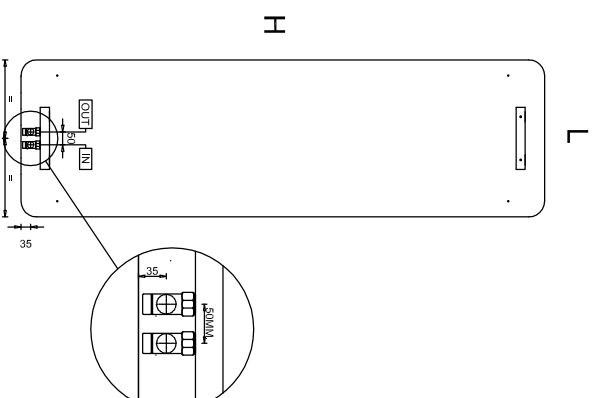
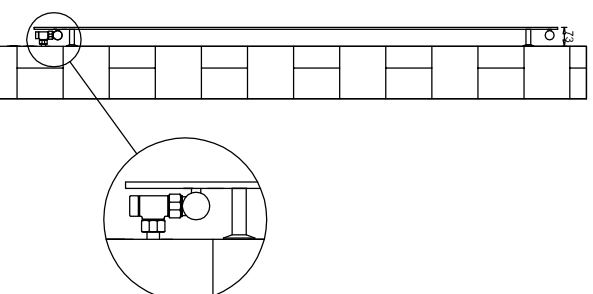
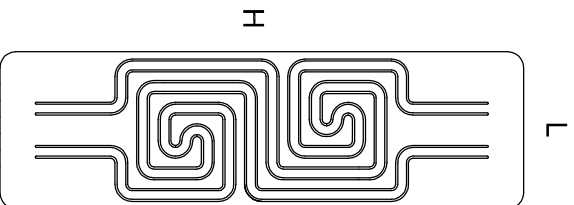


VERSIONE IDRAULICA-HYDRAULIC VERSION

TESEO



CARATTERISTICHE TECNICHE:

Corpo scaldante interamente in alluminio
circolazione fluido vettore in rame
collettori di distribuzione in acciaio.
Temperatura massima di esercizio 95° C.
Pressione massima d'esercizio 15 bar.
Veniciatura a polveri ipossidiche ecologiche
20 gloss di brillantezza.

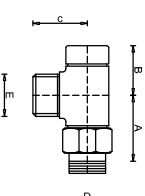
TECHNICAL FEATURES

Aluminium body, copper circuit for fluid circulation
steel distribution manifolds.
Maximum working temperature 95° C
Maximum working pressure 15 bar
Ecological epoxy resin painted, mat (20 gloss)

Modello	Altezza mm.	Larghezza mm.	Potenza Watt ΔT50°	Contenuto Acqua Lt	Peso Kg.
Model	Height mm.	Width mm.	Power Watt ΔT50°	Water Content Lt	Weight Kg.
TES200060	2000	600	1100	0,97	26,4

*Le rese sono calcolate ed in fase di certificazione, potenza calcolata ΔT 50° C.
*Heats have been estimated and waiting for certification, estimated power ΔT 50° C

VALVOLE DI COLLEGAMENTO - CONNECTION VALVES



D	A	B	C	E
1/2"	41	32	26	24x19